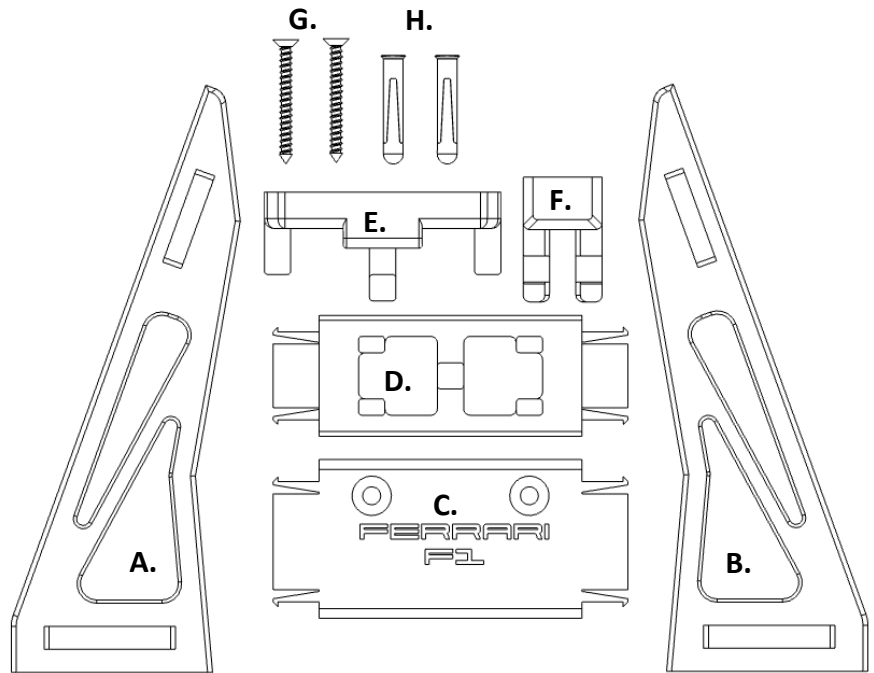


## Wall Mount Instructions

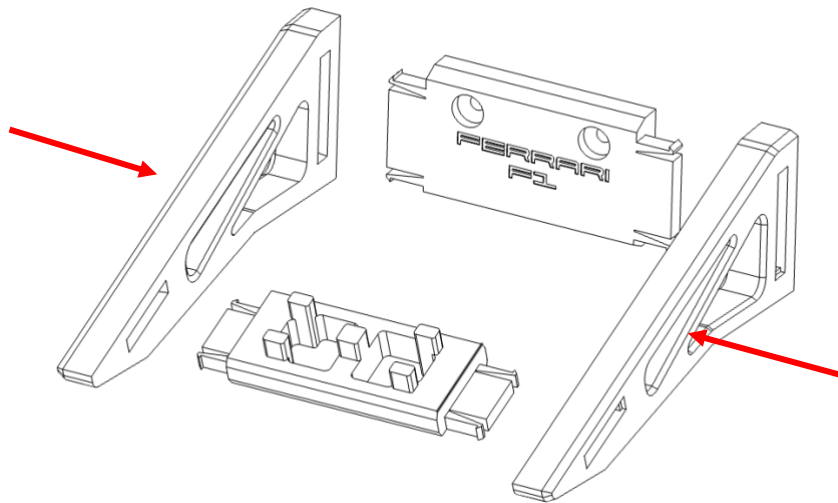
### Ferrari F1 – (42207)

- A. 1x Left Arm
- B. 1x Right Arm
- C. 1x Back Stretcher
- D. 1x Front Stretcher
- E. 1x Flush Mount Horizontal
- F. Flush Mount vertical
- G. 2x Wall Screw
- H. 2x Wall Plug

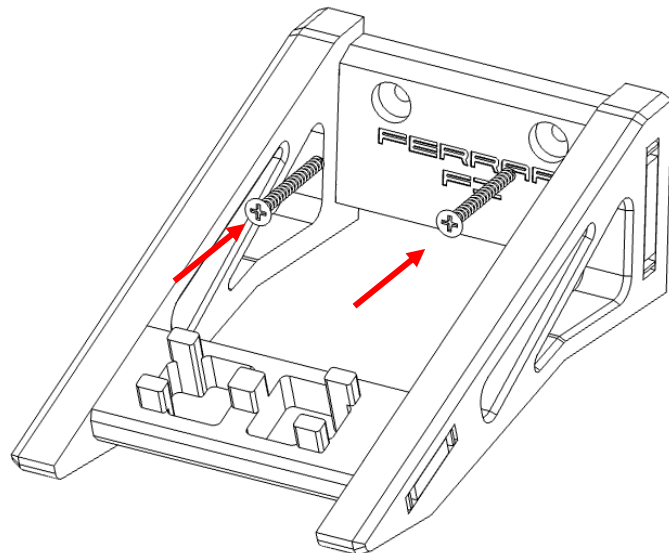


#### Angled Mount

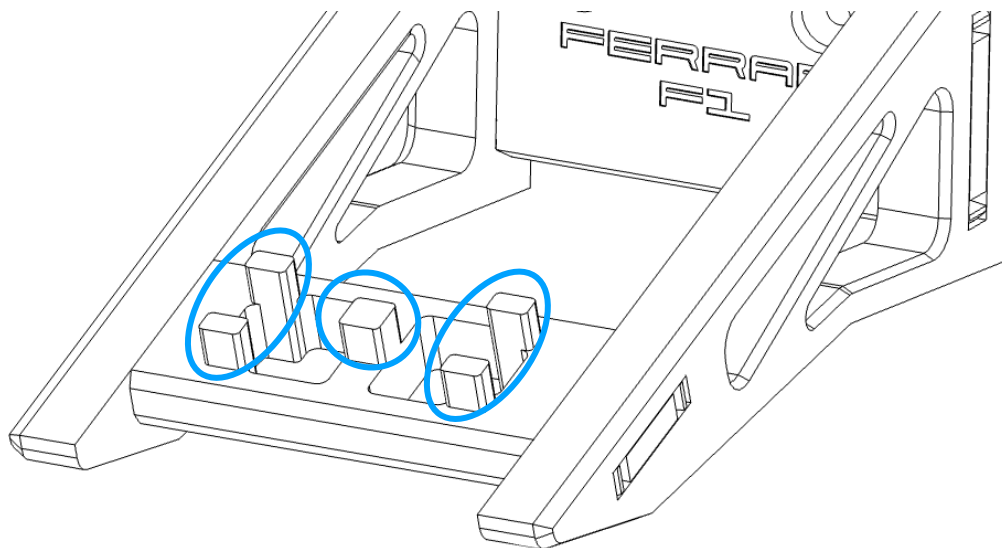
Please ensure the correct orientation of the stretchers and arms.



Install both screws into the back stretcher.  
Do not over tighten (use a screwdriver).

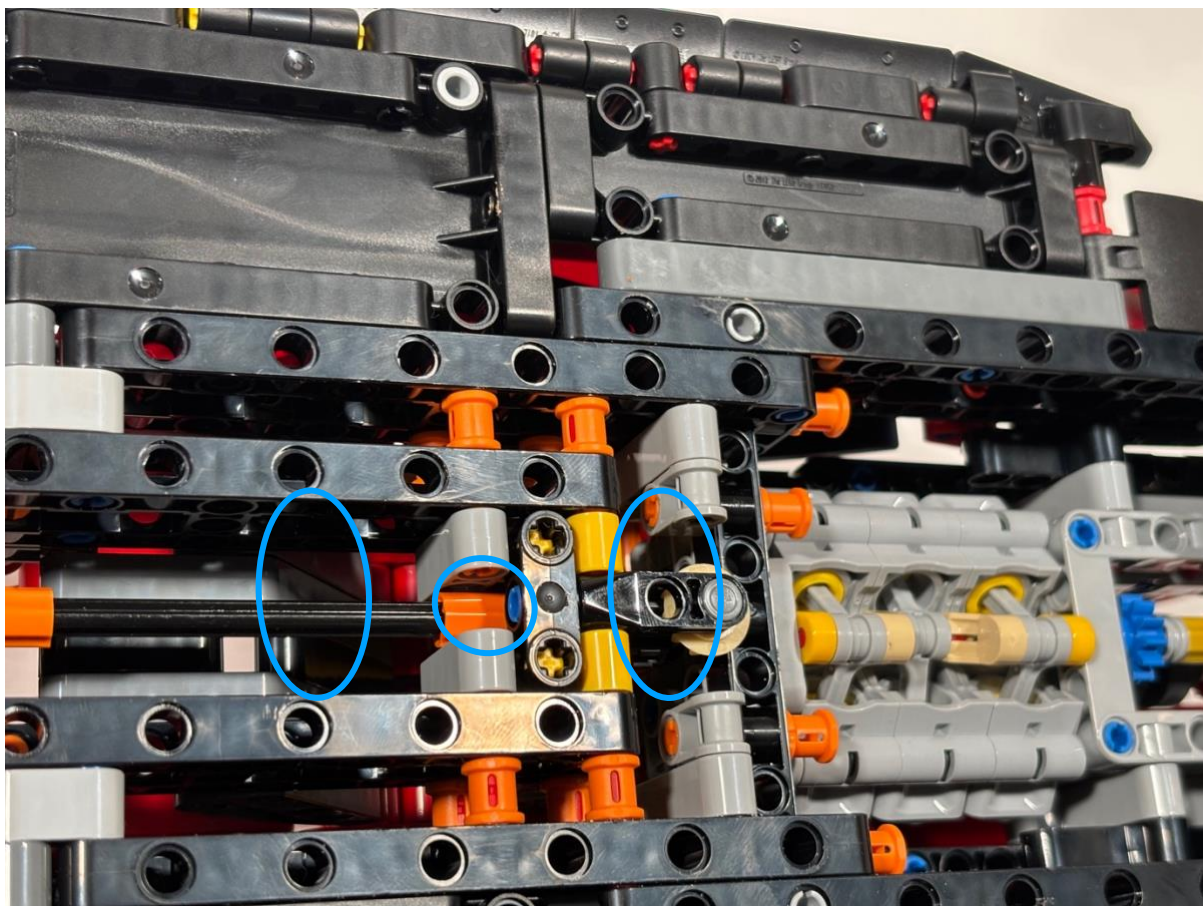


## Wall Mount Instructions Ferrari F1 – (42207)



These tabs insert into the frame of the Lego set, Line up the tabs with the corresponding locations on the Lego set.

You can place the set facing either left or right.



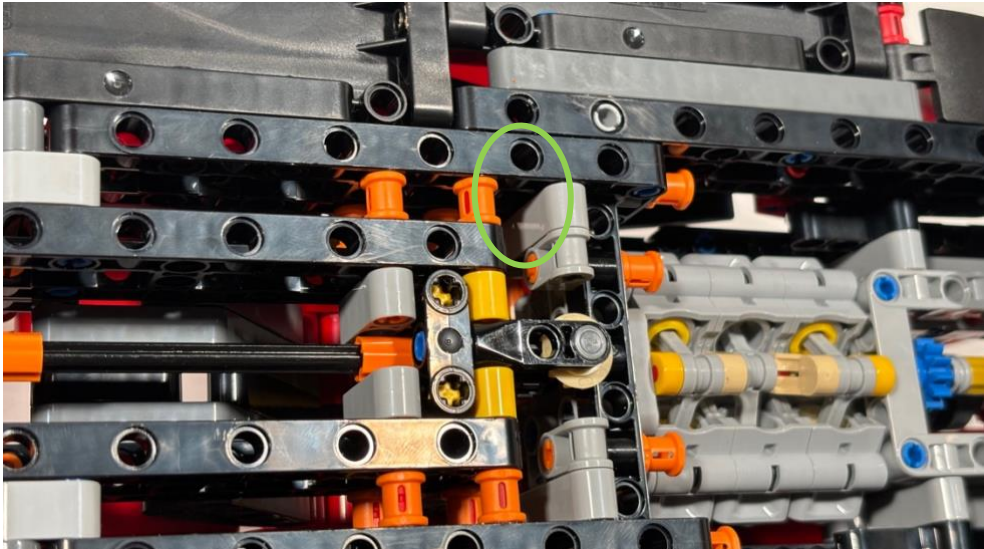
## Wall Mount Instructions Ferrari F1 – (42207)

### Hang Horizontal

Use the hooks on the flush mount to hook up and under the frame as shown.

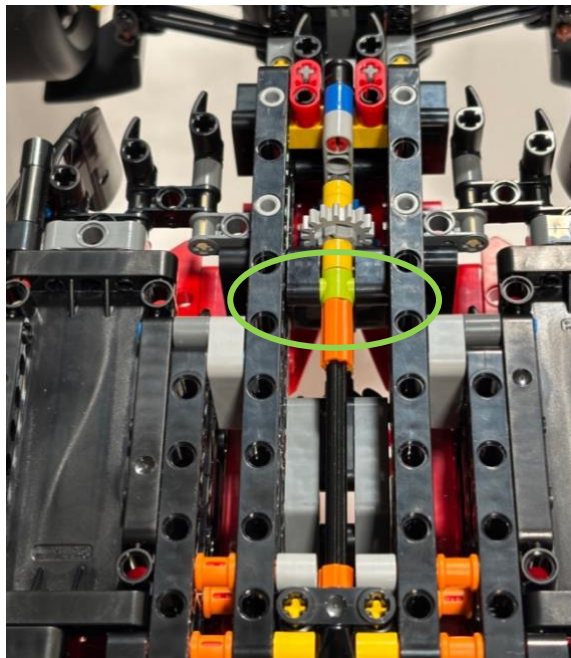
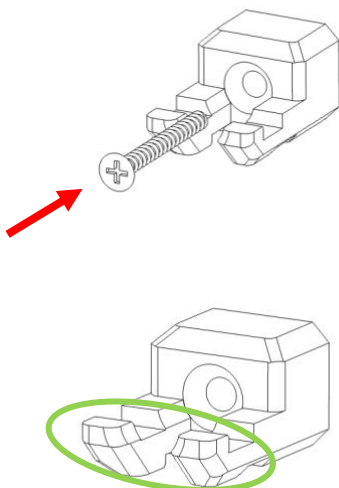


Do not over tighten (use a screwdriver).



### Hang Vertical (facing up)

Use the fins on the flush mount to hook up and under the frame as shown.





## Wall Mount Instructions

### Ferrari F1 – (42207)

#### Hang Vertical (facing down)

Use the fins on the flush mount to hook up and under the frame as shown.

